



2022 Sirena

70' 68

New build without the wait! Vessel Delivery: March 2022

Call for Price

- Power - New - Motor Yachts
- Diesel Fuel
- Fiberglass Hull
- Fort Lauderdale Florida United States

Vessel ID# 2785690

Data Sheet

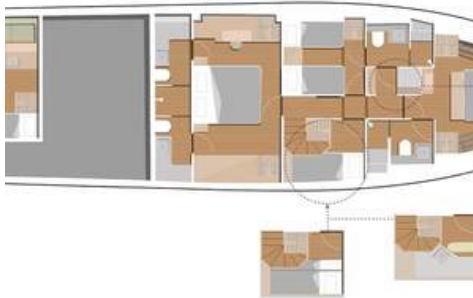
Category: Motor Yachts
 Type: Power - New
 Year: 2022
 Beam: 19' 4"
 LOA: 70' 3" (21.41 meters)
 Draft Max: 4' 3"
 Cabins: 4
 Heads: 3

Maximum Speed: 28
 Cruise Speed: 16
 Range NM: 1200
 Fuel Type: Diesel
 Hull Material: Fiberglass

Dry Weight: 103617
 Fuel Tank: 1387 Gallons (5250.36 Liters)
 Fresh Water: 370 Gallons (1400.6 Liters)
 Holding Tank: 105 Gallons (397.47 Liters)
 HIN/IMO: SSQ000000022

Featured Images





Full Details

Description:

Vessel Delivery: March 2022

Generous internal and external volumes, navigation comfort, maximum efficiency in all trim and sea conditions, attention to detail and excellent seaworthiness: the Sirena 68 was born from the experience gained on previous models, refined on this dual mode hull, which allows navigation in a long-range displacement regime on an economic cruise, but also a true glide at 27-29 knots.

Sirena 68, like all Sirena Yachts, was born from the skilful pencil of German Frers; Cor D Rover interiors, to obtain a boat with the highest technological level contents and a unique and captivating design.

Getting into the water has never been easier, thanks to the hydraulic platform with tender lift, on which a comfortable integrated descent staircase can also be installed. The hull is powerful, designed to ensure large volumes in the forward area out of the water, and comfortable side passages to facilitate movement towards the bow and stern. The T-top is in carbon fiber, like the entire superstructure, with an elegant and well-harmonized look in the lines of the boat.

The interiors of the Sirena 68 are designed by the designer Cor D. Rover, unique in details and finishes. The woods in natural essences, the high quality finishes and the precious fabrics underline a high level craftsmanship and a refined and unique design.

It is a quest for timeless beauty: a combination of classic lines, traditional Turkish craftsmanship and modern shipbuilding techniques and technology. The performance of the boat is optimized by the lightness of the resin and fiberglass and carbon of the superstructures

Vessel Walkthrough:

Main System:

- Stern Thruster
- Joystick control for engines and thrusters (main helm and flybridge)
- Water maker 47 gal/h
- Fresh water deck wash system
- Oil Change System
- Seakeeper 18 Stabilizer

Electronics:

- Garmin Diamond Package (Nr.2 x 22" Chartplotters for saloon & Nr.1x16" Chartplotter for flybridge; Open Array Fantom 54 radar)
- Garmin Additional Nr. 1 x 16" Chartplotter for Platinum or Diamond Package
- Garmin Nr.1x10" chartplotter at crew cabin
- Garmin Fishfinder
- Garmin Class B AIS
- Garmin IP camera in engine room and aft cockpit
- KVH SAT TV system TracVision TV6
- Electric searchlight with a control in main helm and flybridge

Exterior:

- Carbon hard top with electric awning
- Aft flybridge seating arrangement (with cover)
- Manual hi-lo table for flybridge forward portside seating unit (convertible to sunbathing area)
- Aft cockpit electric hi-lo sunshade between two vertical pillars
- 3x Varnished teak top exterior tables
- Integrated ladder between platform and stern
- Teak laid flybridge floor
- Courtesy and pop-up lights on main deck
- Courtesy lights on flybridge
- Two bi-colour under water lights on stern
- Three floodlights installed on aft flybridge
- Teak flag pole on aft flybridge
- Two electric capstans in cockpit
- Refrigerator on flybridge
- Icemaker on flybridge
- Cockpit GRP unit with sink on top space for optional refrigerator or icemaker below
- Icemaker in cockpit GRP unit
- 4x One folding chair for cockpit
- Upgraded hydraulic tender lift capacity

Interior:

- Lower Deck Layout: 4 Cabins, 3 heads (port head to be common head) lounge area with sofa, storage area in corridor
- Fourth cabin with bunkbed bed in starboard side instead of media corner
- Laundry area with washer-dryer and iron table instead of storage area in corridor
- Master Cabin - Drawers and vanity unit with an ottoman on the port side (Instead of two seats and coffee/folding vanity table between the seats)
- Sliding bed (double bed) in port guest cabin
- Miele dishwasher in galley
- 2x Miele separate washer and dryer individual units
- Safe in master cabin
- 4x 110V extra socket
- Wooden Floor in Saloon and Stairs (instead of std carpet)
- Wooden Floor in Lower Deck Cabins and Corridor (instead of std carpet)
- Leather Upholstered interior seating units (Instead of standard fabric. Except helm seat)
- Marble Galley Worktop (instead of std corian)
- Marble Bathroom Worktops (instead of std corian)
- Marble Bathroom and Shower Floors (instead of std corian)

Video-TV-HI-FI:

- 2x 32" LED TV (for guest cabin & VIP)
- 50" LED TV in master cabin
- 50" LED TV in saloon
- Hi-lo system for 42" TV in flybridge portside cabinet
- 42" LED TV in flybridge portside cabinet
- Fusion RA770 Apollo Series audio system for exterior with speakers (Flybridge and foredeck separately and party mode)

Crew cabin:

- Bunk beds
- Head
- Kitchenette
- Fridge
- Microwave oven
- Wine cooler in saloon

Special Requests:

- Fabricate & install custom children safety gate on main deck by stairway to lower deck
- Foredeck to have cocktail table; non-extendable or foldable; on a single leg/pedestal which needs to be height adjustable. The position to be on centerline/middle of the seating area
- BBQ for top of cockpit GRP (similar to 58-018) unit instead of sink
- Fusion RA770 Apollo Series audio system for interior with speakers (Salon and cockpit separately and party mode)
- Install Bluetooth range extenders for Fusion units (TBC)
- Add subwoofer to Fusion RA770 for Cockpit (location TBD)
- Add subwoofer to Fusion RA770 for Flybridge (location TBD)
- Upgrade Fusion speakers from model per separate technical sheet
- Insert additional sound proofing for engine room bulkhead
- Upgraded searchlight ACR
- Painted TV Sat domes, radar and mast in dark grey (not hardtop)
- Electric blinds with blackout, with manual switches and remote control, for Master and VIP cabins
- Shower walls in all bathrooms to be in Corian Glacier Ice, with horizontal grooves if possible
- Certain areas in the boat to be in wood veneer instead of lacquer
- Add insulation on engine room bulkhead, under master cabin floor and wherever else possible.
- Upgrade mounts for pumps, for smoother/quieter operation (TBD)
- Add heavy insulation between engine room and crew cabin

CONTACT BROKER



26 North Yachts

2525 Marina Bay Drive West
Suite 203A
Fort Lauderdale FL 33312 USA
Phone: 1-954-900-9988
Fax: 1-954-206-3075
<https://www.26northyachts.com>



Nicholas Scherb

Yacht Sales

2525 Marina Bay Drive West
Fort Lauderdale FL 33312 USA
Office: 1-954-900-9988
Cell: 1-561-568-2600
Email: nicholas@26northyachts.com



© 2022 International Yacht Brokers Association - Nicholas Scherb, Active Member - Vessel ID: 2785690